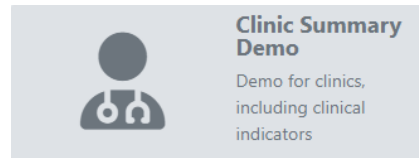


POLAR Walkthrough – Identify patients at Urgent risk of hospitalisation eligible for a GPCCMP or GPCCMP Review

Step 1

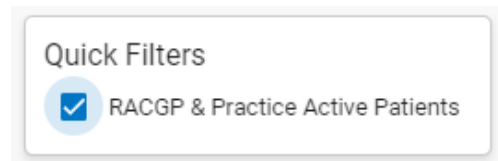
Open POLAR and from Reports Select Clinic Summary Report

Polarexplorer.org.au/login



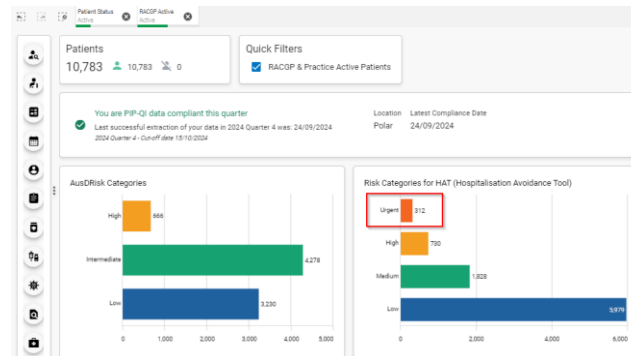
Step 2

Select the Quick Filter RACGP & Practice Active patients shortcut on the top left hand side.



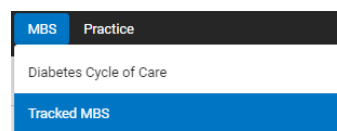
Step 3

Select the Risk Categories for HAT Urgent and confirm the selection.



Step 4

Select MBS then select Tracked MBS from the drop-down list



Step 5

In the Selected TMBS item GPCCMP will be the default.

Select the Patient Cohort Tab

Then export the data from the Export Data Tab

OR if you just want the patient list you can select the buttons from the To Action (Red) Select Combined then go to patient list (top right) then export to excel

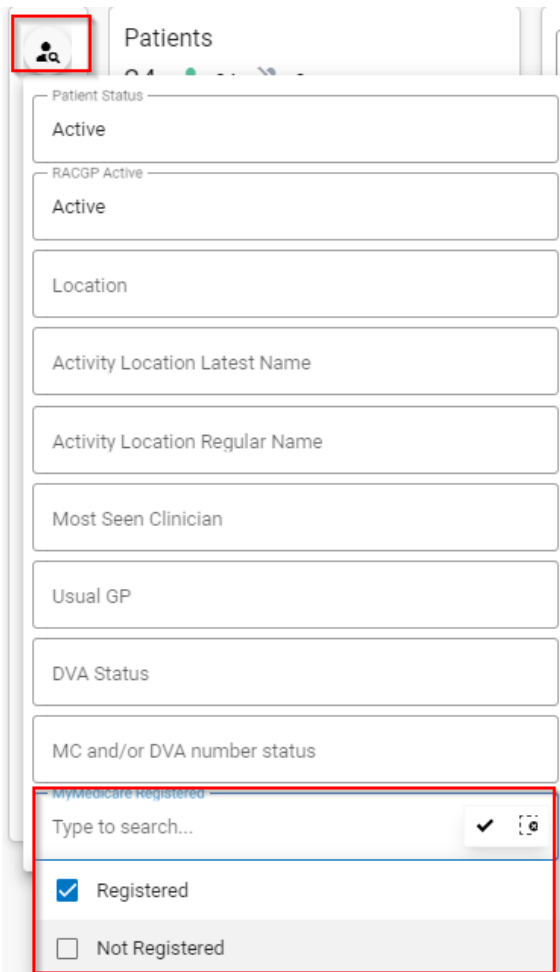
The screenshot shows the POLAR MBS interface. The 'MBS' tab is selected in the top navigation bar. The 'Patient Cohort' tab is selected in the sub-navigation bar. The 'To Action' section on the left has three red buttons: 'Never Had', 'Expired', and 'Combined'. The 'Combined' button is highlighted. The 'Tracked MBS Review Eligibility' section on the right shows '3 Months' selected. The table below shows a list of patients with columns for Patient ID, Full Name, Tracked MBS Item, Latest GPCCMP Date, and Latest GPCCMP. The 'Export Data' button is located at the bottom right of the table.

Patient ID	Full Name	Tracked MBS Item	Latest GPCCMP Date	Latest GPCCMP
11	Payten House	GPCCMP	Never	Never
15	Kenley Graves	GPCCMP	Never	Never
44	Kristopher Ballard	GPCCMP	Never	Never
50	Isabelle Graves	GPCCMP	Never	Never
60	Osvaldo Case	GPCCMP	Never	Never
66	Cameron Whitaker	GPCCMP	Never	Never
71	Kaitlyn Nelson	GPCCMP	Never	Never
73	Dalton Merritt	GPCCMP	Never	Never
79	Zackery Valdez	GPCCMP	Never	Never
83	Elisa Castaneda	GPCCMP	Never	Never
99	Deangelo Pittman	GPCCMP	Never	Never
110	Camille Yu	GPCCMP	Never	Never
124	Enzo Barrett	GPCCMP	Never	Never
154	Demarion Hammond	GPCCMP	Never	Never
181	Sammy Fuentes	GPCCMP	Never	Never
212	Kinley Spencer	GPCCMP	Never	Never
215	Lilanna Giles	GPCCMP	Never	Never
224	Felicity Bernard	GPCCMP	Never	Never

Step 6

To further sort the list:

You can apply the My Medicare registered filter to get a list of who is registered under the patient categories filter select My Medicare then Registered and confirm the selection these patients are already registered. (For your baseline data)



The screenshot shows a 'Patients' filter menu with the following sections:

- Patient Status**: Active
- RACGP Active**: Active
- Location**
- Activity Location Latest Name**
- Activity Location Regular Name**
- Most Seen Clinician**
- Usual GP**
- DVA Status**
- MC and/or DVA number status**
- My Medicare Registered** (highlighted with a red box):
 - Type to search...
 - ☒ Registered
 - ☐ Not Registered



Where to get help

EMPHN general practice improvement & digital enablement:
digitalhealth@emphn.org.au.