

# Place-Based Suicide Prevention Whittlesea and Maroondah

The Victorian Primary Health Networks and the Victorian State Government have combined funding to implement a collaborative community response to suicide. There are 12 trial sites, including Whittlesea and Maroondah local government areas. The goal is to reduce rates of suicide and to improve individual and community resilience and well-being. The initiative will be based on collective impact and will be community focused. Place-based trials will harness local skills, expertise and resources to implement tailored, evidence-based interventions in the local community.

## Place-Based Suicide Prevention (PBSP) is funded to achieve

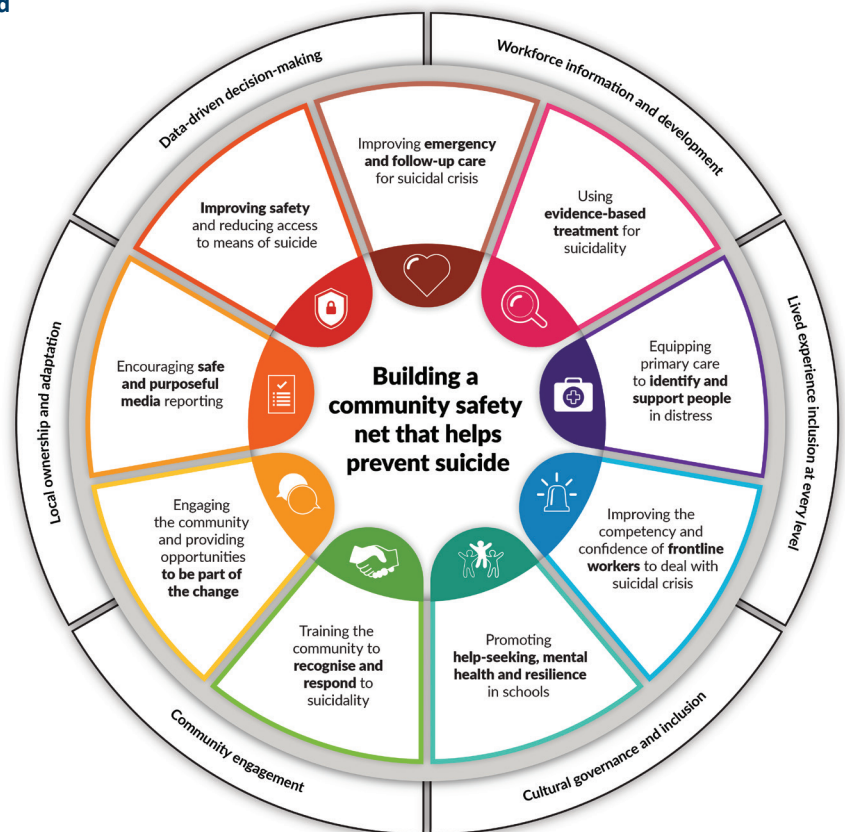
- A measurable reduction in rates of suicide in the designated location
- Improvements to individual and community resilience and well-being
- Improvements to systems to reduce suicide in an ongoing way

## Eastern Melbourne PHN's goals

- Contribute to halving Victoria's suicide rate by 2025
- Partner with State and Commonwealth governments
- Partner with local communities to enhance resilience and reduce suicide rates

## Eastern Melbourne PHN will

- Engage a broad range of stakeholders
- Incorporate input from lived experience, Aboriginal and Torres Strait Islander, and other communities
- Facilitate and connect networks
- Support collaboration to maximise collective input



*LifeSpan: an evidence-based, integrated approach to suicide prevention (2017). Black Dog Institute, Sydney.*

Please contact us if you live, work or study in Whittlesea or Maroondah to express your interest as a stakeholder.

Project Coordinator: Rachel Hughes E: [rachel.hughes@emphn.org.au](mailto:rachel.hughes@emphn.org.au)

Project Officer: Jane Schinas E: [jane.schinas@emphn.org.au](mailto:jane.schinas@emphn.org.au)

You can contact the Referral and Access Team by phone on **9800 1071**, by secure fax on **8677 9510** or by emailing [referral.access@emphn.org.au](mailto:referral.access@emphn.org.au). Please note that this is not an emergency service and is not staffed 24/7. **Always call 000 in an emergency.**

For anyone who may be impacted by this information, we encourage you to seek support.

Lifeline on **13 11 14**

Suicide Call Back Service **1300 659 467**

SuicideLine (Victoria) on **1300 651 251**

**phn**  
EASTERN MELBOURNE

An Australian Government Initiative