

# Black Dog Institute Managing Bipolar Disorder



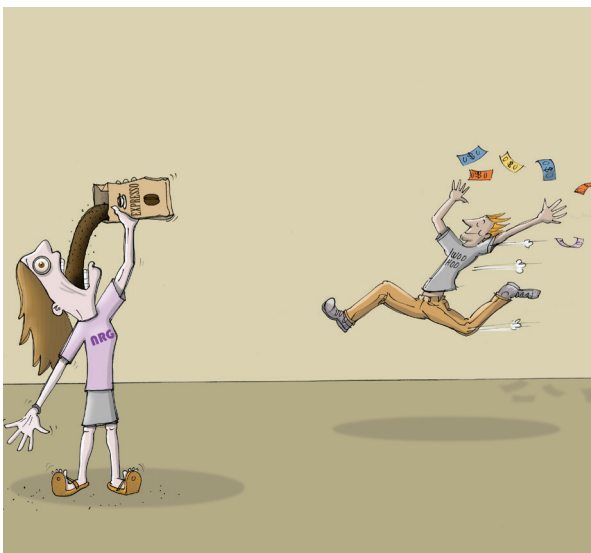
Upcoming Workshop for GPs, GP Registrars, Psychologists,  
Counsellors, Social Workers

## Workshop Details

**When:** Saturday 7th September 2019  
9.00am - 5.00pm

**Where:** Karstens, 123 Queen St,  
Melbourne, VIC, 3000

**Cost:** \$360



## Program Outline

The diagnosis and management of bipolar disorder presents many challenges to primary care clinicians. Our new six hour highly interactive program explores the key issues and difficulties in the detection and treatment of bipolar disorder, equipping the clinician with the knowledge and skills required to deliver an integrated pharmacological and psychological approach best suited to the needs of people living with bipolar disorder.

## Program Outcomes

- Identify the key features of bipolar disorder
- Assess patients presenting with depression for possible underlying bipolar disorder
- Undertake a risk assessment for patients with bipolar disorder
- List common co-morbid conditions that accompany bipolar disorder
- Outline the pharmacological management of bipolar disorder
- Delineate the role of psycho-education and psychological strategies in achieving and maintaining well-being in patients with bipolar disorder

## Accreditation

Cat 1 ALM, providing 40 QI&CPD points, Focused Psychological Strategies CPD, 30 PRPD points with ACRRM. Psychologists - 6hours CPD

## Suitable for

GPs, GP Registrars, Psychologists,, Social Workers, Counsellors and other Allied Health Professionals



**Register Online**

or email [education@blackdog.org.au](mailto:education@blackdog.org.au)



**Black Dog  
Institute**

Black Dog Institute  
Hospital Rd, Randwick NSW 2031  
T. 02 9382 9513 |  
E. [education@blackdog.org.au](mailto:education@blackdog.org.au)  
[www.blackdoginstitute.org.au](http://www.blackdoginstitute.org.au)