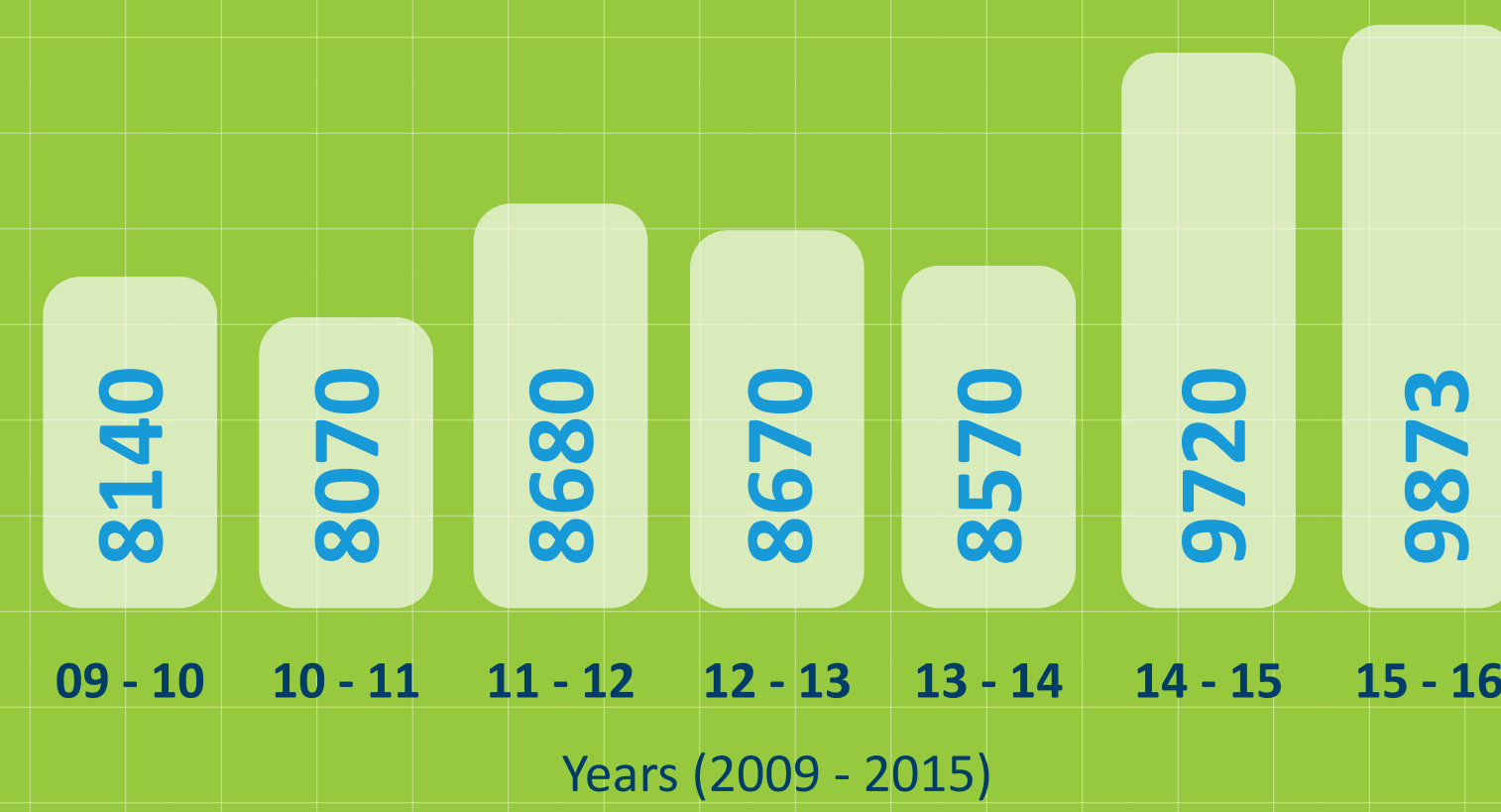


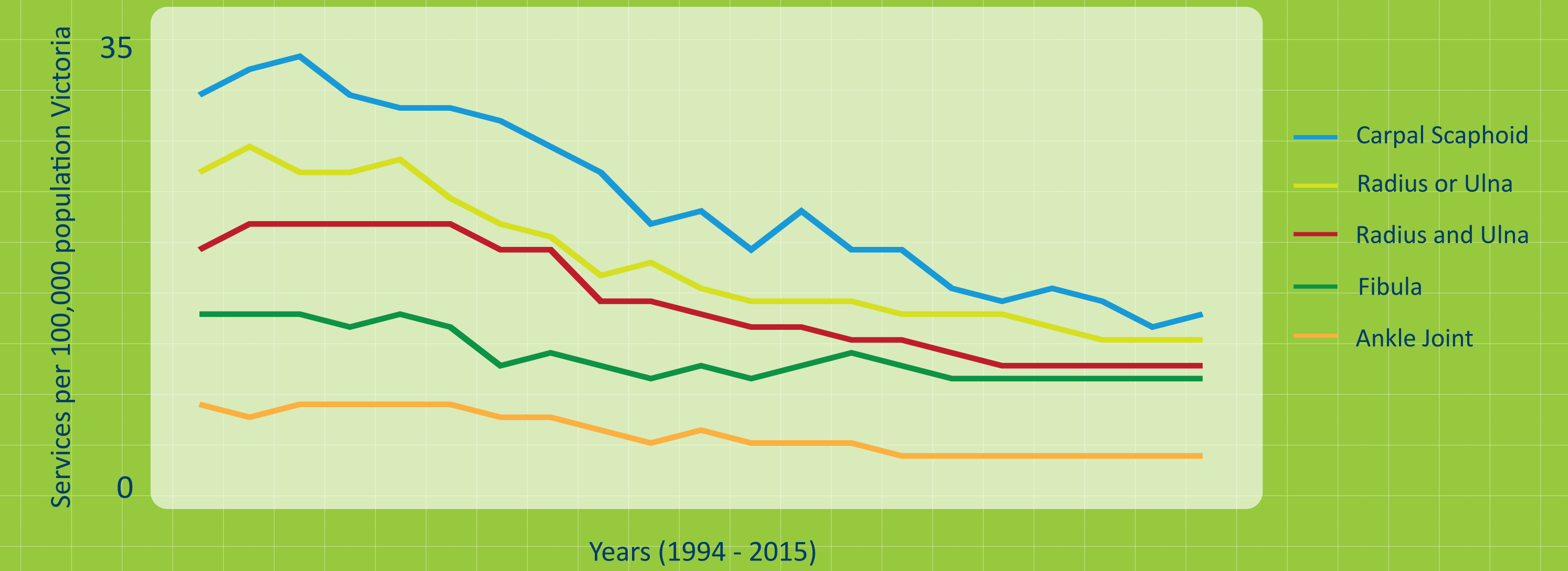
DIVERTING UN-DISPLACED FRACTURES FROM EMERGENCY DEPARTMENTS TO PRIMARY CARE

presentations



Category 4 and 5 fractures of the limbs presented at EDs in the EMPHN catchment.

GP consults

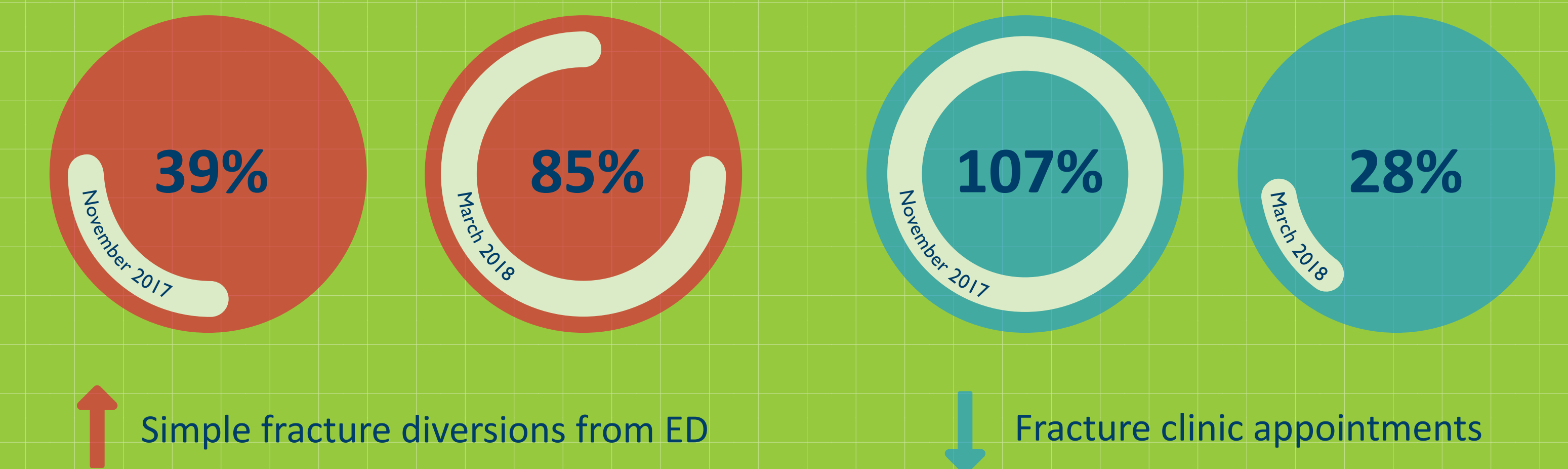


overview

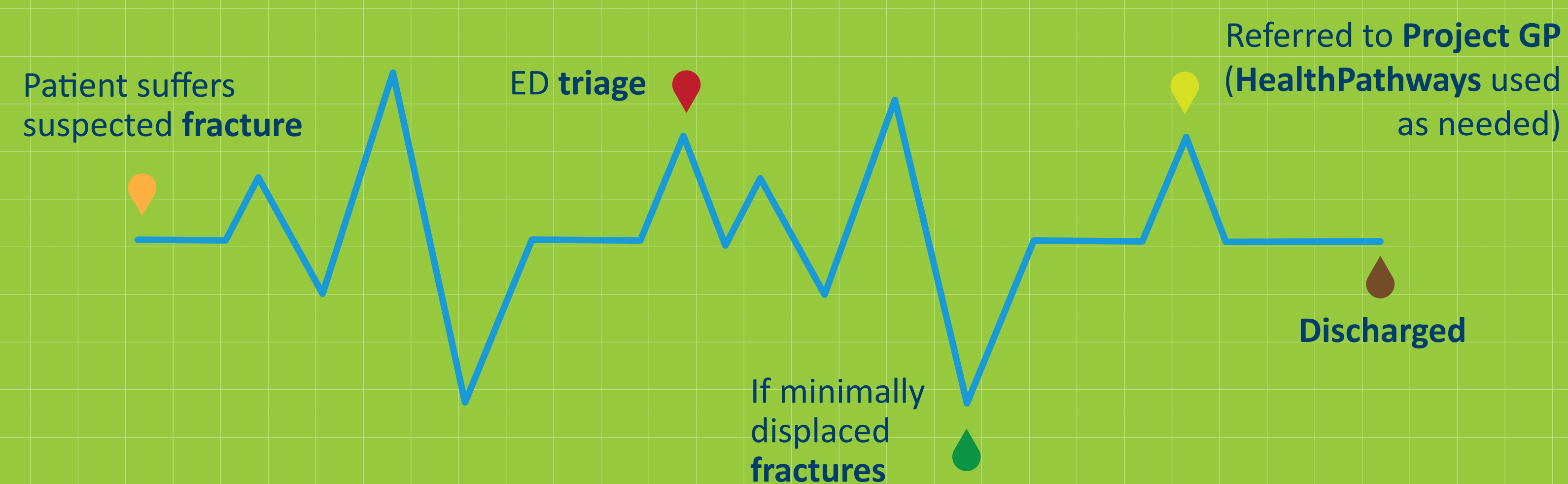
1. Reducing emergency department presentations and avoiding hospitalisations is key for the long-term sustainability of the Australian healthcare system.
2. An effective method of achieving this is by identifying medical conditions presented at hospitals that can be easily treated at the primary level.
3. With this in mind, the project worked specifically to upskill general practitioners to effectively manage and treat simple un-displaced fractures within general practice. This resulted in significantly reduced fracture clinic wait times.
4. GPs were upskilled through training sessions provided by specialists. The orthopaedic pathway suite was used as a resource to guide GPs toward patient care, allowing for increased education, knowledge and improved service connectivity in treating fractures in a practice setting.

results so far

Northern Hospital



structure of fracture diversions



outcomes

- Demonstrated value by combining education, redesign and HealthPathways Melbourne to reduce hospitalisations from simple fractures.
- Highlighted the importance of HealthPathways Melbourne to inform the process of diversions for other clinically appropriate and agreed conditions.
- Presented an exciting opportunity for the future of HealthPathways in the broader Australian health sector.

