

EMPHN Transformative Strategies



With our partners, we facilitate health system improvement for people in eastern and north eastern Melbourne.



Leadership
Understanding
Outcomes
Collaboration

TRANSFORMATIVE STRATEGY

- implement stepped care approaches that are responsive to consumer needs

OUTCOMES

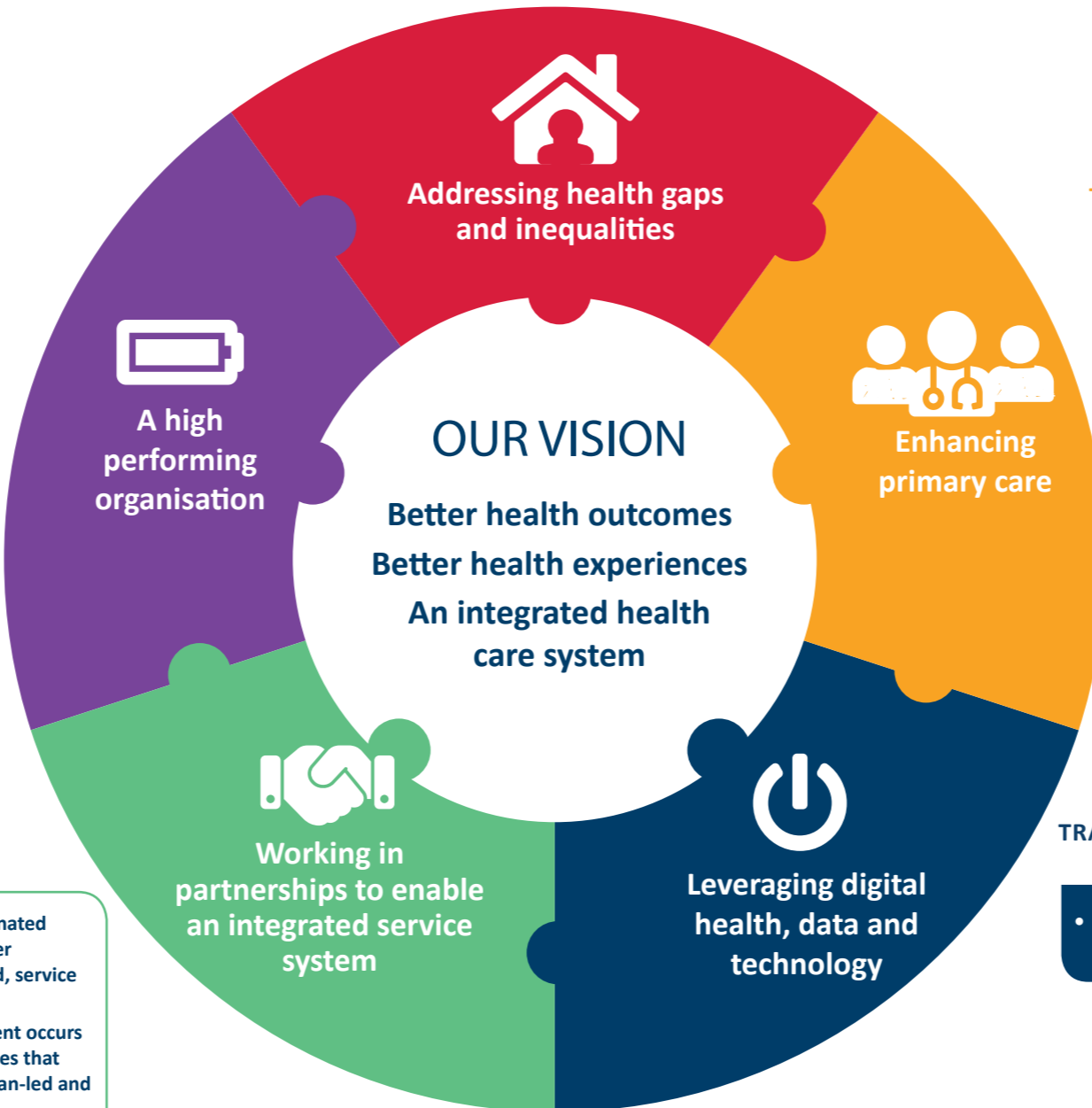
- improved access to the right care, in the right place, at the right time, particularly for at risk and vulnerable groups
- more effective care for people with chronic complex diseases and those at risk of poor health outcomes

TRANSFORMATIVE STRATEGY

- build a positive culture of high performance

OUTCOMES

- EMPHN is recognised and highly valued by funders, partners and our community
- a healthy, highly skilled and sustainable organisation
- accountable governance and effective stewardship of commissioned funds and contracts
- our business systems, processes and infrastructure enable highly effective ways of working together



TRANSFORMATIVE STRATEGIES

- support and encourage primary care to adopt team-based care that is person-centred
- build on practice-based evidence and practice-based innovation

OUTCOMES

- primary care providers deliver person-centred integrated services
- primary care providers deliver timely, high quality and safe health care

TRANSFORMATIVE STRATEGY

- develop commissioning and system change strategies that encourage integration across the boundaries of primary, community and acute services

OUTCOMES

- joint planning and co-ordinated investment results in better integrated, person-centred, service delivery
- service system improvement occurs through co-design processes that are person-centred, clinician-led and provider informed
- strategic commissioning delivers better outcomes for people and an improved service system

TRANSFORMATIVE STRATEGY

- enable health information continuity between providers

OUTCOMES

- health data, economic analysis, planning and evaluation drives impactful service and system development
- improved use of data and technology to support providers in delivering high quality co-ordinated care, and people in managing their own health